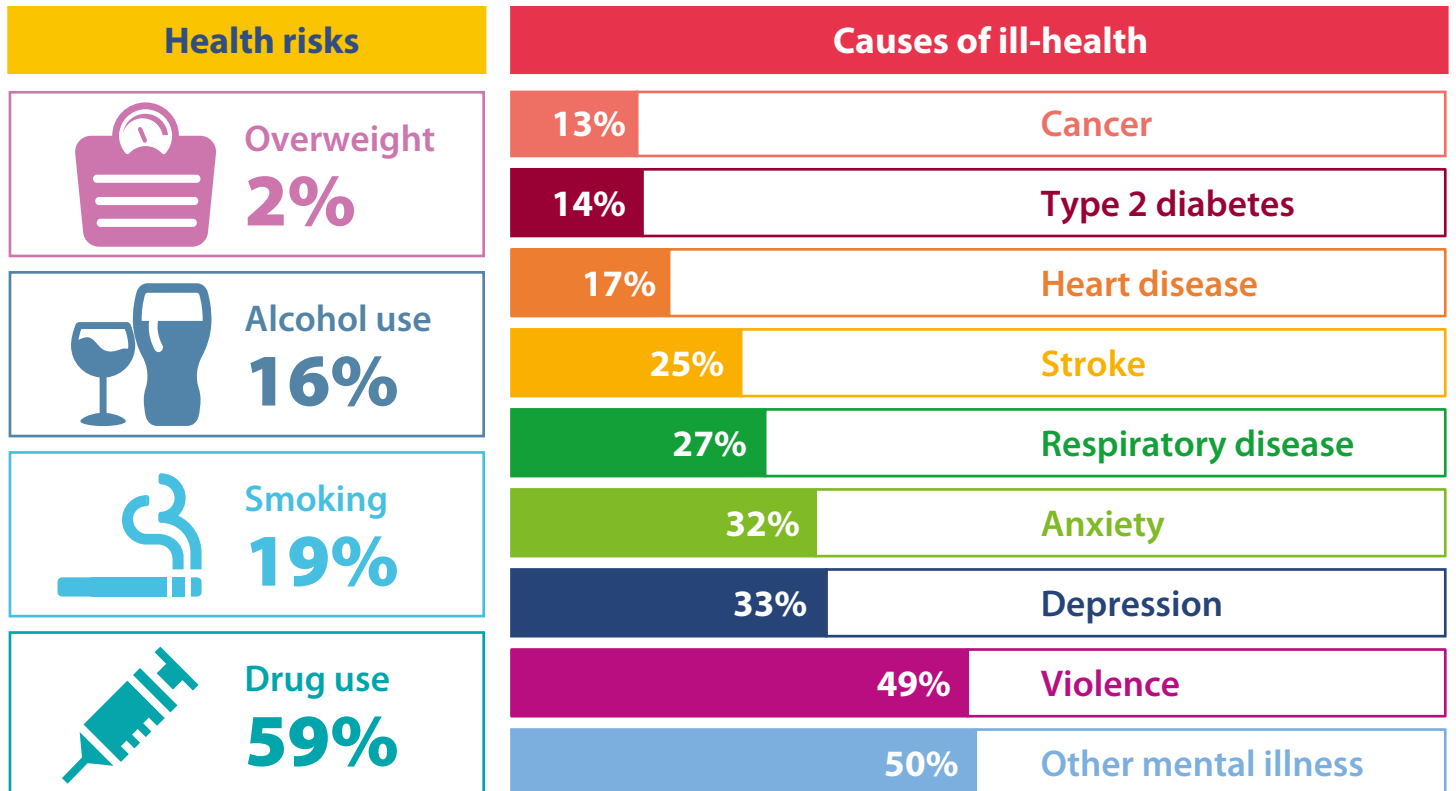


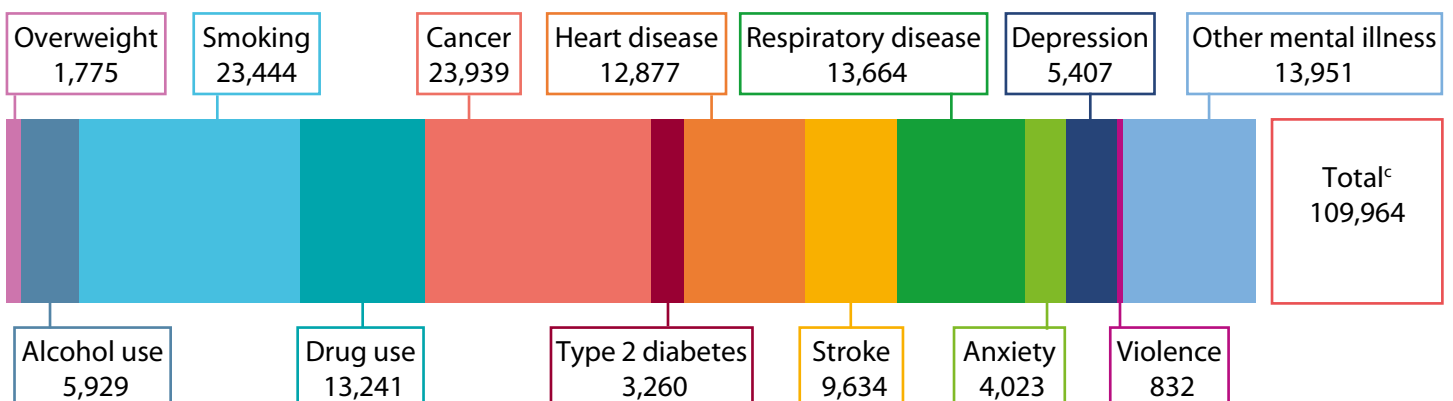
# The annual costs of adverse childhood experiences (ACEs) in Wales

Adverse childhood experiences (ACEs) increase individuals' risks of adopting health-harming behaviours and developing ill health. ACE survey data was used to calculate the proportion of key health risk behaviours and health conditions attributable to ACEs and estimate the associated annual costs to Wales.<sup>a</sup>

## What proportion of health risks and causes of ill-health are attributable to ACEs in Wales?



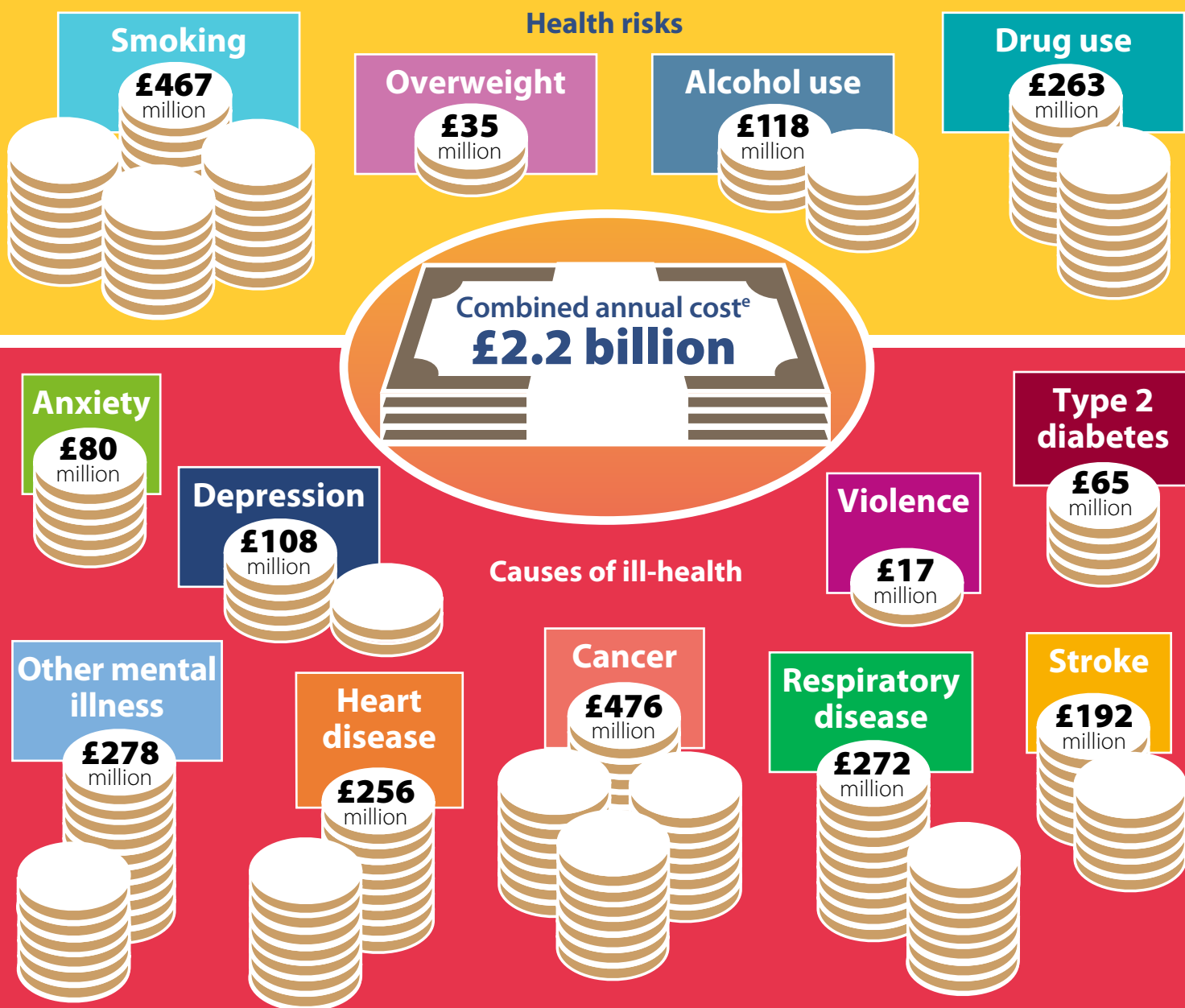
## How many years of healthy life lost<sup>b</sup> does this account for annually?



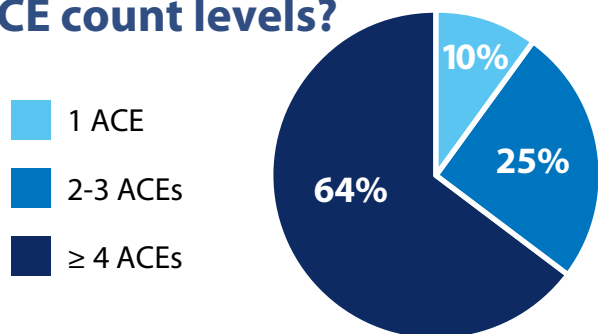
<sup>a</sup>Full methodology is published in Hughes K, Ford K, Kadel R, Sharp C A, Bellis M A. Health and financial burden of adverse childhood experiences in England and Wales: a combined primary data study of five surveys. *BMJ Open* 2020. Population attributable fractions were calculated using Welsh ACE prevalence data and relative risks calculated from five UK ACE studies;

<sup>b</sup>Disability Adjusted Life Years (DALYs) lost, 2017 Global Burden of Disease Study; <sup>c</sup>Excluding DALYs for health risks linked to included causes of ill health.

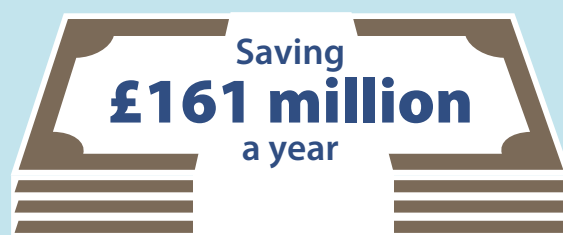
# What are the estimated annual financial costs<sup>d</sup> attributable to ACEs in Wales?



## What proportion of these costs are accounted for by different ACE count levels?



A **10%** reduction in ACE prevalence<sup>f</sup> in Wales would reduce their combined annual cost by **7%**



<sup>d</sup>Costs calculated for 2017; <sup>e</sup>Excludes costs for health risks linked to included causes of ill health; <sup>f</sup>10% reduction applied to each ACE count category, calculated for year 2017.